

Scoop Dolly

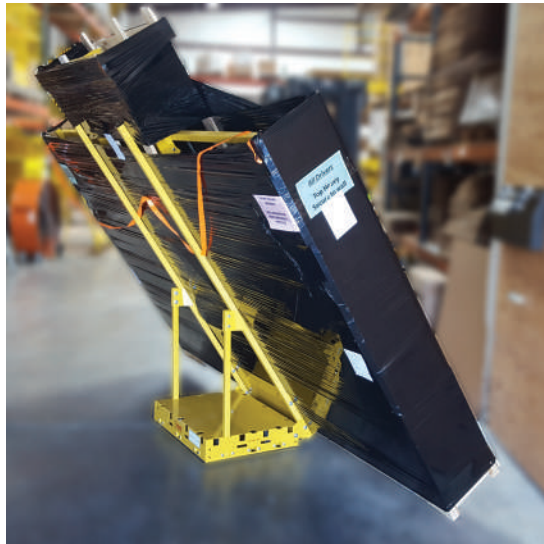
DOLLY TRAX

SAW TRAX

Reduce lifting injuries/workman's comprehensive claims!



Tall, long or narrow objects like door units, window units, staircases, panel saws, and prefabricated walls are difficult to move or load onto a truck. The Scoop Dolly makes loading or unloading these heavy objects a breeze. With the optional leverage step, other heavy objects like bureaus and furniture (3 ft. tall or more) can also be loaded easily. The unique design allows the dolly to operate like a hand truck on a dolly.



Unlike standard hand trucks, the objects can be moved in any direction making long objects easier to move. Once loaded and tilted back, the load on the Scoop Dolly remains stable without needing to be supported by the operator. Load it and roll it or walk away!

The dolly supports the weight of the load not the operator!



Specifications:
-33 3/4" x 30"
-125 lb.
-700 lb weight capacity
-4" red iron/urethane, non-marring casters



Accessories:
-Brakes (sold in pairs)
-Dock Transition Wheels
-Leverage Step
-Directional Wheel

Work faster, easier, and safer!

Saw Trax Mfg. Inc., Kennesaw GA, www.sawtrax.com
770-974-0021, 888-SAWTRAX (729-8729), info@sawtrax.com