



3694 Kennesaw South Industrial Drive, Suite A  
Kennesaw, Georgia 30144  
888-729-8729 TOLL FREE  
770-975-1618 FAX

# Retail Product Catalog



Revised: January 2011

# Table of Contents

Table of Contents.....	2
Introduction to our Company & Products.....	3
Panel Saws .....	4
Sign Maker's Series .....	6
Varsity & 1000 Series.....	7
Heavy duty - 2000 Series.....	8
Specialty - 3000 Series.....	9
Classic Series .....	10
Basic Series.....	11
Why should you choose Saw Trax?.....	12
Panel Saw Parts & Accessories.....	13
Carriage & inserts .....	14
Dust Collection .....	18
Material Support .....	19
Measuring Systems.....	21
Frame Support.....	23
Kits.....	25
Panel Saw Kit.....	26
Beam Saw Kit .....	27
Table Top Units .....	28
Floating Router Table .....	29
Dual Arm Saw.....	30
Hand Held Cutters.....	31
Coro-Claw Deluxe .....	32
Coro-Claw X.....	32
Coro-Claw III.....	32
Coro-Pins .....	33
Bididi Safety Knife .....	33
Guardian Knife Guide.....	33
Policies & Warranty.....	34

# Introduction to our Company & Products

Saw Trax Mfg., Inc was founded in 1988 and is located in Kennesaw, Georgia in the USA. All equipment is manufactured and shipped from this location. Our products are always evolving with the needs of our users.

We offer several cutting solutions for our customer base. From specialized hand cutting tools, table top cutting tools, saw kits to our most popular product, vertical panel saws. Versatility is the key to our success.

Sure we make great a vertical panel saw with the best bearing system and patented alignments systems, but our panel saw is truly the best in its class. In addition to the standard saw most panel saws have, our unique carriage allows the use of different cutting tools. We also offer a floating router insert, a razor knife insert, a rolling sheer insert and a floating saw insert. One machine can cut almost all sheet goods with the proper cutting insert!

For the wood working or cabinet making industry we also offer a dual arm saw. This specialized table top cutter is designed for hard to cut countertops, which require 6" depth of cut. Our floating router table is just the thing for cabinet makers needing to dado decorative grooves in cabinet doors.

For the Sign industry we offer our uniquely designed Coro-claws. This hand held cutter is designed to cut along the flutes of corrugated plastic materials. We also offer a safety vinyl & banner material cutter that we have branded as the Bid-di-Knife. Our very unique Guardian Knife Guide with a razor knife is guaranteed to cut a straight line. These are just a few of the products in addition to our most popular panel saw & mat cutter combo panel saw.

We offer superior customer service and our friendly staff is very knowledgeable and experienced as to how our machines operate and perform when cutting various material.

From the garage shop to the industrial production plant to sign shops, our machines have the right size frame and saw type to cut all of your substrates from plywood, plastics, PVC, aluminum, aluminum composites, MDO, MDF, Melamine, Veneer plywood, and so on.

Your time is money. Our goal is to make your cutting jobs easier and you more productive. We design our sheet cutters from the user's perspective; "What would I want if I were buying this?" That is why we are the fastest growing panel saw company!

# Panel Saws

# Standard Equipment

---

- 10' wide Full Size or 5' wide compact Frame
- Welded steel frame, powder coated finish
- Rip Cut Either Direction
- Nickel chrome plated, 1/8" wall, steel guide tubes
- Top and bottom guide tube brackets ensure straight track
- "Set & Forget" Accu-Square™ Alignment System
- Accu-Fence™ Alignment System (Full Size Units)
- Accu-Glide™ Steel Roller Bearing System
- 2 Carriage locks ensure no play when ripping or routing
- Injected Molded Plastic Material Rollers
- The most Material Support Rollers in its class
- Uses Standard Size Blades (Found Everywhere)
- Saw cord holder & Spring loaded saw counter balance

## Package Features

---

### Basic Series

Universal Saw Plate with clamps  
Fits most 7.5 inch saws (saw not included)

### Classic Series

7 1/4 inch Makita 5007N industrial 15 amp saw  
Trigger locking mechanism  
Standard insert plate  
Saw cover with viewing port  
Single horizontal measuring tape  
Vertical measuring system  
Single rip gauge  
24 tooth carbide tipped blade

### Varsity & 1000 Series

7 1/4 inch Makita 5007N industrial 15 amp saw  
Trigger locking mechanism  
Spinning saw insert plate  
Dust collection hood with viewing port  
2.5" vacuum hose – 12 foot  
Dust shroud brush  
Vertical measuring systems  
Dual rip gauge  
Stop block with strip bar  
2 horizontal measuring tapes  
24 tooth carbide tipped blade

### 2000 Series

7 1/4 inch Worm drive 15 amp saw  
Toggle power switch  
Spinning saw insert plate  
Dust collection hood  
2.5" vacuum hose – 12 foot  
Dust shroud brush  
Vertical measuring systems  
Dual rip gauge  
Stop block with strip bar  
2 horizontal measuring tapes  
24 tooth carbide tipped blade  
Steel covered material rollers

### 3000 Series

10 inch Milwaukee 15 amp saw  
Trigger locking mechanism  
Spinning saw insert plate  
Dust collection hood  
2.5" vacuum hose – 12 foot  
Dust shroud brush  
Vertical measuring systems  
Dual rip gauge  
Stop block with strip bar  
2 horizontal measuring tapes  
Carbide tipped blade  
Steel covered material rollers

### Sign Makers Series

7 1/4 inch Makita 5007N industrial 15 amp saw  
Trigger locking mechanism  
Spinning saw insert plate  
Dust collection hood with viewing port  
2.5" vacuum hose – 12 foot  
Dust shroud brush  
Vertical measuring systems  
Dual rip gauge  
Stop block with strip bar  
2 horizontal measuring tapes  
24 tooth carbide tipped blade  
Knife cutter insert plate  
Spring hold down

# Sign Maker's Series



## COMPACT UNITS: Five foot wide frame

52 inch Cross Cut (C52SM) **List Price:** \$2249.00

64 inch Cross Cut (C64SM) **List Price:** \$2471.00

## FULL SIZE UNITS: Ten foot wide frame

52 inch Cross Cut (FS52SM) **List Price:** \$2849.00

64 inch Cross Cut (FS64SM) **List Price:** \$3071.00

76 inch Cross Cut (FS76SM) **List Price:** \$3282.00

88 inch Cross Cut (FS88SM) **List Price:** \$4315.00

100 inch Cross Cut (FS100SM) **List Price:** \$4626.00

### Standard Equipment:

- POWDER COATED FRAME
- NICKEL-CHROMED GUIDE TUBES
- ACCU-GLIDE SEALED BEARING SYSTEM
- STANDARD CARRIAGE SYSTEM
- RETRACTION MECHANISM
- CORD HOLDER

### Package Includes:

- MAKITA 5007N SAW
- SPINNING SAW INSERT PLATE
- DUST HOOD, HOSE, BRUSH
- FOLDING STAND AND WHEELS
- DUAL RIP GAUGE
- STOP, BAR AND TAPES
- SPRING HOLD DOWN
- KNIFE CUTTER PLATE

### Optional Accessories:

- FULL MID-FENCE
- FLOATING ROUTER PLATE
- FULL BUILDER'S EXTENSIONS
- LASER POINTER
- ACM CUTTER
- PREMIUM BLADES

### Product Description:

Sign Makers Series cuts a variety of material, not just wood. Materials such as aluminum composites, corrugated plastics, foam board, PVC material, wood and much more can now be cut with one machine! We created our Sign Maker's Series to include an accessory package to fit your specialized needs. You no longer need to buy a panel saw AND a mat cutter. Ideal for sheet goods that are less than 1 ¾ inches thick with precision cuts.

A Makita 5007N circular saw on a spinning saw insert offers ease of use when cutting vertically or horizontally. The best dust collection hook ups possible are provided with this machine. The Folding stand is as easy to open & close as a ladder, yet provides complete stability while in operation. For portability and mobility, transport wheels are included. Both the vertical and horizontal measuring systems help to ensure accurate cuts while the stop bar provides the capability to make repetitive cuts. A spring hold down is included to help support thinner material and the Knife cutter insert allows you to cut softer material that would be destroyed by a circular saw.

Our patented Accu-Square alignment system assures that your machine will never go out of square and our unique sealed roller bearing system provides for smoother carriage action and tighter tolerances.

The Compact models are ideal for customers with space constricted shops.

This Full Size models are designed to have more material support to provide ease of use when rip cutting.

Want to use V groove Dibond? Add our Floating Router Plate. Want to cut Dibond with no saw dust & have smooth edges? Add our ACM Cutter insert.

# Varsity & 1000 Series



## **VARSITY SERIES - COMPACT UNITS:** Five foot wide frame

52 inch Cross Cut (C52VP) **List Price:** \$1999.00  
 64 inch Cross Cut (C64VP) **List Price:** \$2199.00

Pictured with  
optional  
Mid-Fence



## **1000 SERIES - FULL SIZE UNITS:** Ten foot wide frame

52 inch Cross Cut (1052) **List Price:** \$2599.00  
 64 inch Cross Cut (1064) **List Price:** \$2799.00  
 76 inch Cross Cut (1076) **List Price:** \$2999.00  
 88 inch Cross Cut (1088) **List Price:** \$3999.00  
 100 inch Cross Cut (10100) **List Price:** \$4299.00

### **Standard Equipment:**

- POWDER COATED FRAME
- NICKEL-CHROMED GUIDE TUBES
- ACCU-GLIDE SEALED BEARING SYSTEM
- STANDARD CARRIAGE SYSTEM
- RETRACTION MECHANISM
- CORD HOLDER

### **Package Includes:**

- MAKITA 5007N SAW
- SPINNING SAW INSERT PLATE
- DUST HOOD, HOSE, BRUSH
- FOLDING STAND AND WHEELS
- DUAL RIP GAUGE
- STOP, BAR AND TAPES

### **Optional Accessories:**

- FULL MID-FENCE (MDFC)
- FLOATING ROUTER PLATE (FLTR)
- FULL BUILDER'S EXTENSIONS (BLEXT)
- LASER POINTER (PSLA)

### **Product Description:**

The Varsity & 1000 Series panel saws includes standard features plus an accessory package we would recommend to most wood workers. This series unit is ideal for customers that need to break down sheet goods that are less than 1 ¾ inches thick with precision cuts.

A Makita 5007N circular saw on a spinning saw insert and the best dust collection hook ups possible are provided with this machine. The Folding stand is as easy to open & close as a ladder, yet provides complete stability while in operation. For portability and mobility, transport wheels are included. Both the vertical and horizontal measuring systems help to ensure accurate cuts while the stop bar provides the capability to make repetitive cuts.

Our patented Accu-Square alignment system assures that your machine will never go out of square and our unique sealed roller bearing system provides for smoother carriage action and tighter tolerances.

The Compact models are ideal for customers with space constricted shops or need portability. This Full Size models are designed to have more material support to provide ease of use when rip cutting.

Want to use a router or a utility knife in this unit? Add our Floating Router Plate or our Knife Plate.

# Heavy duty - 2000 Series



**FULL SIZE UNITS:** Ten foot wide frame

52 inch Cross Cut (2050)	<b>List Price:</b> \$3299.00
64 inch Cross Cut (2064)	<b>List Price:</b> \$3499.00
76 inch Cross Cut (2074)	<b>List Price:</b> \$3699.00

### **Standard Equipment:**

- POWDER COATED FRAME
- NICKEL-CHROMED GUIDE TUBES
- ACCU-GLIDE SEALED BEARING SYSTEM
- STANDARD CARRIAGE SYSTEM
- RETRACTION MECHANISM
- CORD HOLDER

### **Package Includes:**

- Skill Worm Drive SAW
- SPINNING SAW INSERT PLATE
- DUST HOOD, HOSE, BRUSH
- FOLDING STAND AND WHEELS
- STEEL COVERED MATERIAL ROLLERS
- DUAL RIP GAUGE
- STOP, BAR AND TAPES

### **Optional Accessories:**

- FULL MID-FENCE (MDFC)
- FLOATING ROUTER PLATE (FLTR)
- FULL BUILDER'S EXTENSIONS (BLEXT)
- LASER POINTER (PSLA)

### **Product Description:**

This machine designed customer that are cutting **50** or more sheets a week. The 2000 Series panel saw includes standard features plus an accessory package we would recommend to most production companies. This series unit is ideal for customers that need to break down a large volume of sheet goods that are less than 1 ¼ inch thick with precision cuts.

A heavy duty Skill Worm Drive saw on a spinning saw insert is best suited for long hours of operation. The best dust collection hook ups possible are provided with this machine. The Folding stand is as easy to open & close as a ladder, yet provides complete stability while in operation. For portability and mobility, transport wheels are included. This frame size provides an unlimited rip cut capability. Both the vertical and horizontal measuring systems help to ensure accurate cuts while the stop bar provides the capability to make repetitive cuts. Steel covered material rollers make it virtually impossible to damage the material support system.

Our patented Accu-Square alignment system assures that your machine will never go out of square and our unique sealed roller bearing system provides for smoother carriage action and tighter tolerances.

# Specialty - 3000 Series

---



**FULL SIZE UNITS:** Ten foot wide frame

50 inch Cross Cut (3050)	<b>List Price:</b> \$3999.00
62 inch Cross Cut (3062)	<b>List Price:</b> \$4199.00
74 inch Cross Cut (3074)	<b>List Price:</b> \$4399.00

### **Standard Equipment:**

- POWDER COATED FRAME
- NICKEL-CHROMED GUIDE TUBES
- ACCU-GLIDE SEALED BEARING SYSTEM
- STANDARD CARRIAGE SYSTEM
- RETRACTION MECHANISM
- CORD HOLDER

### **Package Includes:**

- Milwaukee 10 INCH SAW
- SPINNING SAW INSERT PLATE
- DUST HOOD, HOSE, BRUSH
- FOLDING STAND AND WHEELS
- STEEL COVERED MATERIAL ROLLERS
- DUAL RIP GAUGE
- STOP, BAR AND TAPES

### **Optional Accessories:**

- FULL MID-FENCE (MDFC)
- FLOATING ROUTER PLATE (FLTR)
- FULL BUILDER'S EXTENSIONS (BLEXT)
- LASER POINTER (PSLA)

### **Product Description:**

This machine is designed for cutting thicker material, such as custom doors & recommended for customer that need to cut melamine. The 3000 Series panel saw includes standard features plus an accessory package we would recommend to most custom door manufacturers. This series unit is ideal for customers that need to break down sheet goods that are less than 2 ½ inches thick with precision cuts.

A Milwaukee 10 inch circular saw is used on a spinning saw insert. A dust collection hook up is provided with this machine. The Folding stand is as easy to open & close as a ladder, yet provides complete stability while in operation. For portability and mobility, transport wheels are included. This frame size provides an unlimited rip cut capability. Both the vertical and horizontal measuring systems help to ensure accurate cuts while the stop bar provides the capability to make repetitive cuts. Material rollers are steel covered to make a superior material support system.

Our patented Accu-Square alignment system assures that your machine will never go out of square. Our unique sealed roller bearing system provides for smoother carriage action and tighter tolerances.

# Classic Series



**COMPACT UNITS:** Five foot wide frame

52 inch Cross Cut (C52C) **List Price:** \$1549.00

64 inch Cross Cut (C64C) **List Price:** \$1749.00



**FULL SIZE UNITS:** Ten foot wide frame

52 inch Cross Cut (FS52C) **List Price:** \$2149.00

64 inch Cross Cut (FS64C) **List Price:** \$2349.00

76 inch Cross Cut (FS76C) **List Price:** \$2549.00

### **Standard Equipment:**

- POWDER COATED FRAME
- NICKEL-CHROMED GUIDE TUBES
- ACCU-GLIDE SEALED BEARING SYSTEM
- STANDARD CARRIAGE SYSTEM
- RETRACTION MECHANISM
- CORD HOLDER

### **Package Includes:**

- MAKITA 5007N SAW
- STANDARD SAW INSERT PLATE
- DUST CONTAINMENT HOOD
- SINGLE RIP GAUGE
- SINGLE HORIZONTAL MEASURING SYSTEM

### **Optional Accessories:**

- FOLDING STAND & WHEELS
- SPINNING SAW INSERT
- FULL MID-FENCE
- FLOATING ROUTER PLATE
- WALL MOUNTING SYSTEM
- FULL BUILDER'S EXTENSIONS
- LASER POINTER

### **Product Description:**

The Classic Series panel saw includes standard features plus a beginner's accessory package we would recommend to most hobbyists. This series unit is ideal for customers that need to break down sheet goods that are less than 1 3/4 inches thick with precision cuts.

A Makita 5007N circular saw is on a standard saw plate that can be inserted vertically or horizontally. A dust containment hood is provided to control the flow of dust particles. A viewing port on the hood allows the user see where the blade is cutting. Both the vertical and horizontal measuring systems help to ensure accurate cuts while the stop bar provides the capability to make repetitive cuts.

Our patented Accu-Square alignment system assures that your machine will never go out of square and our unique sealed roller bearing system provides for smoother carriage action and tighter tolerances.

The Compact models are ideal for customers with space constricted shops or need portability. This Full Size models are designed to have more material support to provide ease of use when rip cutting.

Want to use a router or a utility knife in this unit? Add our Floating Router Plate or our Knife Plate

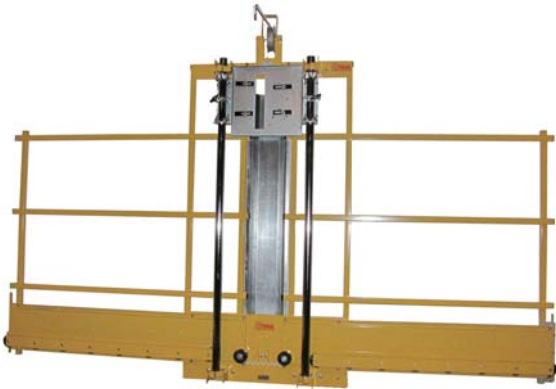
# Basic Series

---



**COMPACT UNITS:** Five foot wide frame

52 inch Cross Cut (C52B) **List Price:** \$1199.00



**FULL SIZE UNITS:** Ten foot wide frame

64 inch Cross Cut (FS64B) **List Price:** \$1999.00

### Standard Equipment:

- POWDER COATED FRAME
- NICKEL-CHROMED GUIDE TUBES
- ACCU-GLIDE SEALED BEARING SYSTEM
- STANDARD CARRIAGE SYSTEM
- RETRACTION MECHANISM
- CORD HOLDER

### Package Includes:

- UNIVERSAL SAW INSERT PLATE

### Optional Accessories:

- FOLDING STAND & WHEELS
- FULL MID-FENCE
- FLOATING ROUTER PLATE
- WALL MOUNTING SYSTEM
- FULL BUILDER'S EXTENSIONS
- LASER POINTER

### **Product Description:**

The Basic Series panel saws include only the standard equipment & it is ideal for cost conscious customers. A universal saw insert is provided so the user can mount nearly any 7 ¼ inch circular saw. The universal plate can be inserted vertically or horizontally. This series unit is ideal for customers that need to break down sheet goods that are less than 1 ¾ inches thick without the need a precision measurement system.

Our patented Accu-Square alignment system assures that your machine will never go out of square and our unique sealed roller bearing system provides for smoother carriage action and tighter tolerances.

The Compact models are ideal for customers with space constricted shops.

This Full Size models are designed to have more material support to provide ease of use when rip cutting.

Want to use a router or a utility knife in this unit? Add our Floating Router Plate or our Knife Plate

## Why should you choose Saw Trax?

### Versatility:

- Saw Trax offers a wide variety of cutting tools, such as a router, utility knife, rolling shears or a saw. All of our cutting tools can be utilized in the same unit.
- Our standard saw plate can utilize most any 7 ¼ inch saw.
- Saw Trax Panel Saws are the only panel saw that has the capability to raise the material support rollers to a higher level so you may cut your material from the bottom up, to eliminate shattering of thin plastics.
- We are the only panel saw company to offer a floating router option for every model. A floating router plate provides a consistent depth of cut by following the contours of your material.
- We utilize a component based assembly. If a part gets damaged, just that part can be replaced. If you need to extend your unit, just add the components to extend the height or length. No need to replace the entire machine.
- Our unique dust containment brush allows for hassle free dust collection & offers a light dusting to knock any loose debris from your material into the dust collection area.

### Accuracy:

- Alignment of our machines is done in the factory, so they are accurate once you get it. This eliminates your frustration of aligning a machine to get a square cut.
- Saw Trax uses a Sealed Roller Bearing system rather than the old style, plastic nylon, U-bolt rollers system. This tracking system provides a smoother, more accurate tracking than the old style roller system & has a longer life expectancy.
- Cutting accuracy is within 1/64<sup>th</sup> of an inch.

### Convenience:

- Saw Trax has a unique carriage design that allows you to quickly change cutting tools.
- We use our exclusive, patented, set & forget, Accu-Square™ alignment system. Our machines never go out of square.
- We pre-assemble all units in the factory, so your assembly is minimal.
- Saw Trax panel saws use a standard size blade, so replacement saw blades are easy to find.
- The saw motor that we use is an “off the shelf” saw. Should you need to replace your saw motor your down time is very minimal.
- Our folding stand is pre-assembled for your convenience and opens like a ladder, requiring only 1 person to “set it up”.
- Dust collection hook ups are standard on most of our models so there are no additional hidden expenses when purchasing from Saw Trax.

### Safety:

- When our Makita saw is off the machine, the blade is guarded. This protects the blade from being damaged when placed on a solid surface & prevents injuries like cutting yourself on an exposed blade.
- Our utility knife blade also retracts to prevent injuries when off the machine.

### Service & Cost:

- We offer superior customer service and our friendly staff is very knowledgeable and experienced as to how our machines operate and perform when cutting various material.
- Even with all these advantages, Saw Trax still maintains the ability to offer a superior product for a lower cost.

**Our motto: “Accurate though Innovation, Simple by Design” is not just a statement, it’s a goal.**



Panel Saw  
Parts  
&  
Accessories

# Carriage & Inserts

## Universal Carriage System



**Part Description:** Universal Carriage System

**Part Number:** UCAR

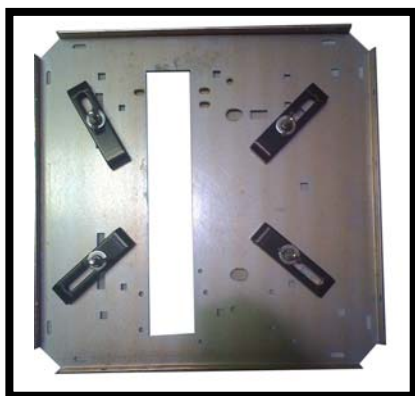
**List Price:** \$280.00

Standard on all  
Saw Trax Panel  
Saws Packages

**Product Description:**

Our Universal Carriage can be fitted with a standard saw plate, spinning saw insert plate, knife cutter plate, ACM cutter plate and/or floating router plate. You can change each plate in approximately eight seconds.

## Universal Saw Insert Plate



**Part Description:** Universal Saw Insert

**Part Number:** SPLT-U

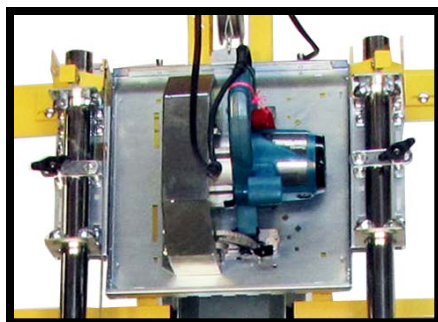
**List Price:** \$100.00

Standard on the Basic Series.

**Product Description:**

- This universal plate will accommodate most 7 ¼ inch saws.
- Switch from cross to rip cut by removing & rotating the plate, then reinserting it into the carriage.

## Standard Saw Insert Plate



**Part Description:** Standard Saw Insert  
for Makita 5007 N Circular saw.

**Part Number:** SPLT

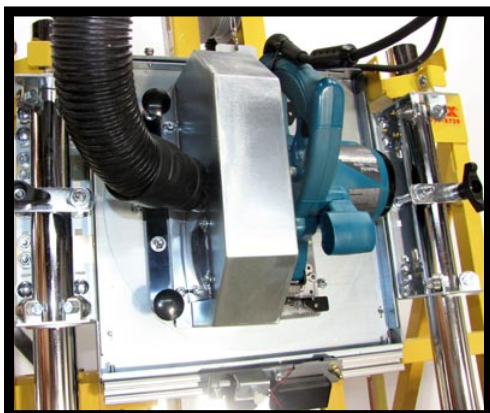
**List Price:** \$100.00 – saw & hood not included in plate pricing.

Standard on the  
Classic Series.

**Product Description:**

- This plate will only accommodate a Mikita 5007 N circular saw.
- Switch from cross to rip cut by removing & rotating the plate, then reinserting it into the carriage.

## Spinning Saw Insert Plate



**Part Description:** Spinning Saw Insert

**Part Number:** RTCU

**List Price:** \$200.00 – Saw & hood not included in plate pricing

Standard on Sign  
Makers, Varsity, 1000,  
2000 & 3000 Series.

**Product Description:**

- Allows user to switch from cross cut to rip cut position without removing saw plate.
- The unique locating pin design ensures 90° turns of the carriage.

## Premium 7 ¼ Inch Blades



**Part Description:** 60 Tooth Premium Plastics Blade

**Part Number:** PPB60

**List Price:** \$115.00

**Part Description:** 60 Tooth Premium Aluminum Blade

**Part Number:** PAB60

**List Price:** \$115.00

Our Makita and Skil Worm Drive Saws use a standard 7 1/4" blade. This size blade is found everywhere. We have premium blades only.

Description	60T Premium Aluminum Blade
Part Number	PAB60
Teeth	60
Diameter	7 ¼"
Grind	TCG
Kerf	0.079"
Rake	0
Arbor Hole	5/8" KO
Substrates	Aluminum, Wood, and Soft Plastics
Resharpen	Yes

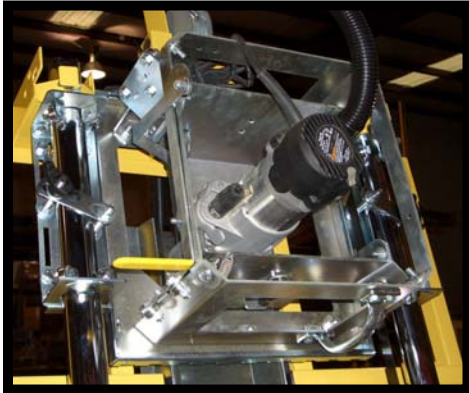
Perfect for Non-Ferrous Metals such as Aluminum, Copper, Brass, Bronze.

Works well for plywood and other timbers

Description	60T Premium Plastics Blade
Part Number	PPB60
Teeth	60
Diameter	7 ¼"
Grind	ATB
Kerf	0.079"
Rake	5
Arbor Hole	5/8" KO
Substrates	Hard and Soft Plastics
Resharpen	Yes

Perfect for Plastics such as Sintra, lexan, & Styrene. Smooth, clean and melt-free Cuts on Most Plastics.

## Floating Router Plate



**Part Description:** Floating Router Plate

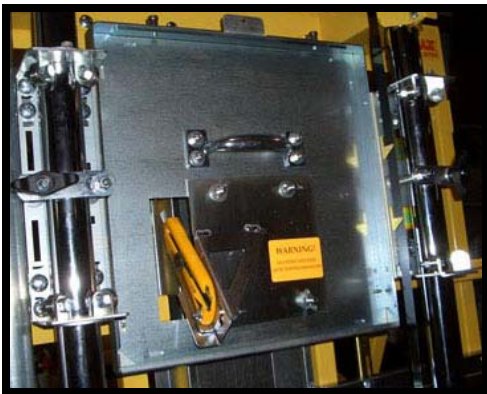
**Part Number:** FLTR

**List Price:** \$400.00 – Router not included in plate pricing

**Product Description:**

- Floating platform generates uniform dados even on bowed or twisted material.
- Fits on all current Saw Trax models.
- Universal design accommodates most router motors.
- This set up allow the router to follow the contours of the sheet, giving consistent dado even on bowed or warped material.

## Fixed Knife Insert



**Part Description:** Fixed Knife Insert

**Part Number:** KCWP

**List Price:** \$199.00

Standard on the  
Sign Makers Series

**Product Description:**

The Knife Cutter Plate is cut soft materials, such as Coroplast, Gator Foam, Cardboard, and Foam Board. Knife can RIP and cross cut. Uses OLFA® Knife with “snap to sharpen” blades. Standard on the Sign Makers Package.

## Pivoting Knife Insert



**Part Description:** Pivoting Knife Insert

**Part Number:** PKWP

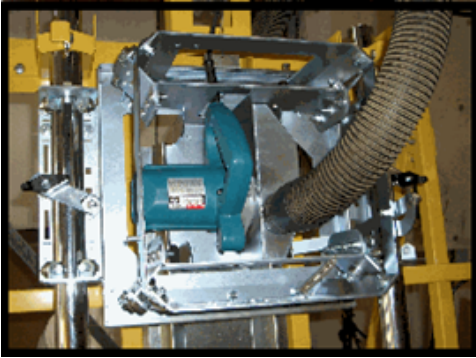
**List Price:** \$249.00

**Upgrade to Pivoting Knife on the Sign Makers Series for only \$50.00**

**Product Description:**

The Pivoting Knife Cutter Plate is used to cut or score Sintra, Expanded PVC, Coroplast, Gator Foam, Cardboard, and Foam Board. Knife can RIP and cross cut. Uses OLFA® Knife with “snap to sharpen” blades.

## Freedom Saw Insert



**Part Description:** Freedom Saw

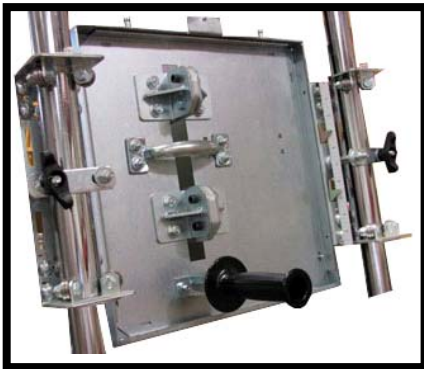
**Part Number:** FLTS

**List Price:** \$995.00 (after market) / \$695.00 (to upgrade as primary saw on any package price)

**Product Description:**

- Now you have the freedom to cut substrates virtually dust free with the new "Freedom" saw from Saw Trax.
- Floating platform eliminates the gap between the saw plate and the top of the material, where most of the saw dust comes from.
- Cut in both directions, vertically & horizontally.
- A Delryn plate on the bottom of the saw plate is used to ensure your material isn't scratched.
- Fits on all current Saw Trax models.

## ACM Insert



**Part Description:** ACM Cutter Insert

**Part Number:** ACM4

**List Price:** \$380.00

<p>Not compatible with the 3000 Series Package</p>
--

**Product Description:**

- Dust free cutting system.
- Cuts 3& 4 mil Dibond, .040 Aluminum, 3-6 mil Forex and Expanded PVC, 5 mil AlumaCorr and Sintra up to 6 mil.
- Two opposing circular cutters pinch the material forcing it to split.
- Cuts are rounded so there are no sharp edges.

# Dust Collection

## Dust Containment Brush



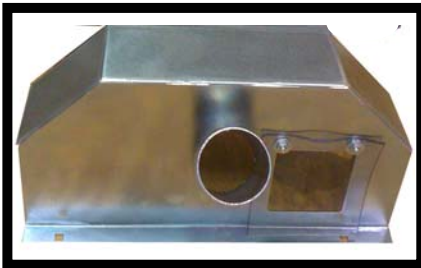
**Part Description:** Dust Brush  
**Part Number:** DB  
**List Price:** \$40.00

Included on all models except the Basic or Classic Series

**Product Description:**

- A dust Brush under the saw plate will channel saw dust up into the dust hose.
- The brush also keeps debris knocked down when rip cutting.
- Attached with magnetic for easy removal when cutting thick material

## Dust Hood & Hose



**Part Description:** Makita Dust collection Hood with Hose  
**Part Number:** MDCPU  
**List Price:** \$100.00

Only fits Makita 5007N Saw.

Included in Sign Makers, Varsity & 1000 Series

**Product Description:**

- Fits the Makita 5007N saw only
- Dust Hood has viewing window so you can see the blade.
- A 12 foot long, 2.5 inch dust hose is included.

## Frame Dust Collection Upgrade



**Part Description:** Frame Dust Collection Upgrade  
**Part Number:** IDPL  
**List Price:** \$130.00

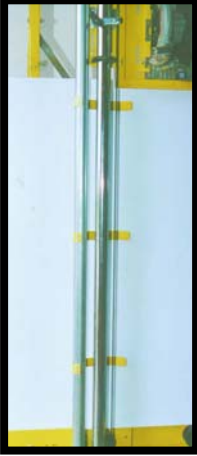
4 inch hose not included

**Product Description:**

- If dust collection is an issue in your shop, this is something you need to get.
- The bottom of the frame includes an additional port. As the dust falls down to the bottom, the additional port draws dust away.
- Includes 4 inch Port, Adapter, & Additional dust guards
- (4 inch hose or vacuum not included.)

# Material Support

## Spring Hold Down



**Part Description:** Spring Hold Down  
**Part Numbers & List Price:**

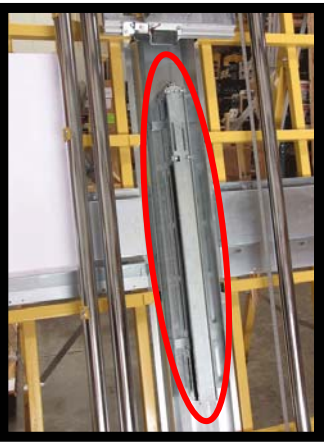
<b>52inch</b>	– SPHD52	\$143.00
<b>64inch</b>	– SPHD64	\$165.00
<b>76inch</b>	– SPHD76	\$176.00
<b>88inch</b>	– SPHD88	\$209.00
<b>100inch</b>	– SPHD100	\$220.00

Standard on Sign Makers Package

**Product Description:**

- Holds thinner materials against frame for more material support.
- Recommended for materials 1/4" or less.
- Does not have to be removed when cutting thicker materials.

## Sheet Clamp



**Part Description:** Sheet Clamp  
**Part Number:** CLMP  
**List Price:** \$250.00

**Product Description:**

- Holds material under carriage so you don't have to.
- Especially handy with cutting long narrow pieces on the material rollers or long pieces on the mid fence.
- A magnet is used to hold it open and a different magnetic strip holds it onto the center pan.
- Easily removable when rip cutting.
- NOW 4 feet in length!

New picture coming soon!

## Plastic Material Rollers with Hub



**Part Description:** Material Roller with Hub  
**Part Number:** MROL  
**List Price:** \$8.00 each

Standard on the All Panel Saws.

**Product Description:**

- Replacement roller for panel saw fence

## Steel Sleeve for Material Rollers



Plastic Roller & Hub not included

**Part Description:** Steel Sleeve for Material Roller

**Part Number:** SRS

**List Price:** \$11.50 each or Set of 18 for \$200.00

Standard on the  
2000 & 3000  
Series Panel Saw.

**Product Description:**

- Recommended for high production facilities and steel fabricators
- Makes material rollers virtually unbreakable
- Steel sleeves fit over our traditional material rollers

## Full Builder's Extension



**Part Description:** Full Builder's Extensions

**Part Number:** BLEXT

**List Price:** \$350.00 (Set of 2)

Add 8 Steel Covered  
Material Rollers for  
the 2000 or 3000  
Series

**Product Description:**

- Set includes two 28" fence extensions
- Extends Compact wheel base to 10 feet
- Easily removed for storage or transport
- Perfect for taking to the jobsite with a Compact machine & Hitch Carrier

## Mid-Fence



**Part Description:** Full Mid-Fence

**Part Number:** MDFC

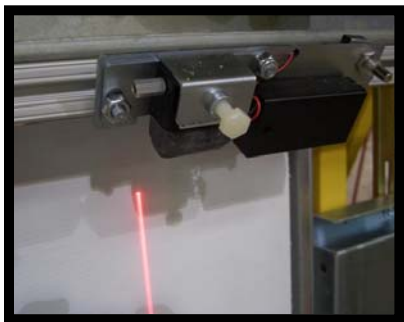
**List Price:** \$350.00

**Product Description:**

- Prevent back strain by cutting smaller pieces at waist level.
- All steel construction – No warping or splintering!
- Shelf easily snaps on and off.

# Measuring Systems

## Laser Line

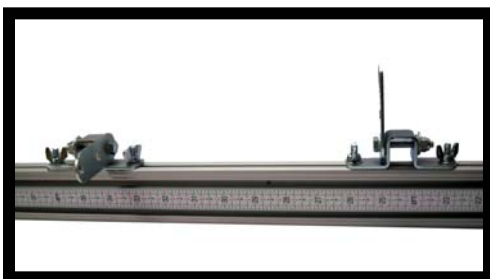


**Part Description:** Panel Saw Laser Line  
**Part Number:** PSLA  
**List Price:** \$200.00

**Product Description:**

- Set to illuminate cut line of your circular saw or knife cutter insert.
- Great for trimming prints in the sign industry.
- Uses standard batteries found locally.

## Flip Stop System



**Available in 2 Lengths**

**Description:** 96" Flip Stop  
**Part Number:** FSTP96  
**List Price:** \$350.00

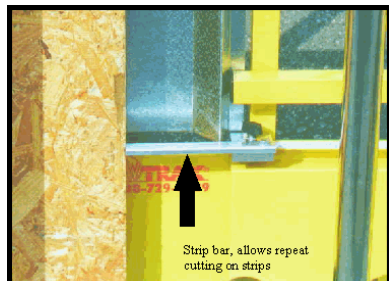
- or -

**Description:** 56" Flip Stop  
**Part Number:** FSTP56  
**List Price:** \$290.00

**Product Description:**

- Perfect for use with longer sheets or where cutting exact lengths repetitively.
- Can be placed on either the right or left side of machine.
- Includes specialized aluminum extrusion, tape and two adjustable stops.

## Stop Bar with Strip



**Part Description:** Stop Bar with Strip Support  
**Part Number:** STOP  
**List Price:** \$80.00

**Product Description:**

- For fast, repetitive cuts.
- Strip support allows you to make cuts less than 1 inch wide.
- Can be placed on right or left lower fence or mid fence.

Included on all models except the Basic & Classic Series

## Measuring Tapes



**Part Description:** Measuring Tapes

**Part Number:** TAPE

**List Price:** \$15.00

Included on all  
models except  
the Basic Series

**Product Description:**

- Self Adhesive metal tape.
- Can be applied to left or right side of the machine.
- Can be used on lower fence or mid-fence.

## Dual Rip Gauge + Tape



**Part Description:** Dual Rip Gauge

**Part Number:** DRGS

**List Price:** \$40.00 – Specify cross cut needed

Included on all  
models except  
the Basic Series

**Product Description:**

- Pointers and measuring tape included in this item.
- For fast and easy rip cuts.
- Use the pointer to set rip measurement.
- An upper and lower pointer can be used to set rip widths from either direction.
- A lower spring maintains tape measure tension.

# Frame Support

## Folding Stand



**Part Description:** Folding Stand

**Part Number:** FSTND

**List Price:** \$160.00

**Product Description:**

- Attaches to the back of the frame, so there is no need to wall mount your unit.
- Allows for portability.
- Opens & Closes just like a ladder for quick storage & set up.
- Hinged & cross brace for added security

Standard on Sign Makers, Varsity, 1000, 2000 & 3000 Series Packages.

## Transport Wheels



**Part Description:** Folding Stand

**Part Number:** WHLS

**List Price:** \$40.00

**Product Description:**

- Big 5" wheels will allow you to easily transport your unit.
- Unique design has the wheels off the ground when set up with the folding stand so the unit will not roll away from the user when in use.
- To transport the unit, simply tilt the unit vertically until the wheels make contact with the ground.

Standard on Sign Makers, Varsity, 1000, 2000 & 3000 Series Packages.

## Wall Mounting System



**Part Description:** Wall Mounting System

**Part Number:** WMS

**List Price:** \$40.00

**Product Description:**

- This system will allow you to permanently mount the panel saw to the wall.
- Includes mounting brackets and hardware.
- Must remove folding stand in order to secure saw to the wall.

# Hitch Carrier

---



**Part Description:** Hitch Carrier

**Part Number:** HCPS

**List Price:** \$250.00

Only compatible with  
COMPACT units

**Product Description:**

- Take the safety and cutting features of a vertical panel saw to the jobsite!
- Fits our Compact 52 and Compact 64 models
- Hitch slides into any standard 2" receiver
- Add a set of Builders Extensions (BLEXT) for a 10' wheel base!

# **Build it Yourself**

## **Kits**

# Panel Saw Kit

---



<b>Part Description:</b>	<b>Part Number:</b>	<b>List Price:</b>
52 inch Cross Cut	52KT	\$700.00
64 inch Cross Cut	64KT	\$800.00
76 inch Cross Cut	76KT	\$900.00
88 inch Cross Cut	88KT	\$1000.00
100 inch Cross Cut	100KT	\$1100.00

## Product Description:

- They offer the shop or home owner an accurate and affordable means of sizing large sheets of material
- You get the same accuracy, convenience and quality of a commercial panel saw and panel router machine at a fraction of the price.
- The panel kits provide the guide tubes, guide tube brackets and our carriage with the U-bolt style bearings. You build your own frame. You spend a fraction of the price of the full panel saw but still get the accuracy and convenience of an industrial panel saw or panel router.

## Features:

- Super strong 1/8" wall steel guide tubes.
- Universal carriage that can easily attach your saw. Router inserts are available.
- Guide tube support brackets that are powder coated.
- Bolt attaching kit.

## Includes:

- Assembled Carriage
- Guide Tubes
- Mounting Hardware
- Building instructions
- Universal saw insert with clamps
- Floating router insert available

# Beam Saw Kit



**Part Description:** Beam Saw Kit

**Part Number:** BSK

**List Price:** \$1429.00

Circular saw and table not included.

**Add Dust Collection Hook ups:**

**Part Description:** Beam Saw Kit Dust upgrade

**Part Number:** BSKDST

**List Price:** \$299.00

## Product Description:

- Provides a 6 inch depth of cut with a cross cut capability of 55 inches.
- Accurate and affordable means of sizing thick sheets of material
- The panel kits provide the guide tubes, guide tube brackets and our carriage with sealed roller bearings. You build your own frame. You spend a fraction of the price of the full panel saw but still get the accuracy and convenience of an industrial Beam Saw.
- REQUIRES MAKITA 5402 NA CIRCULAR SAW

## Features:

- Super strong ¼" wall steel guide tubes.
- Guide tube support brackets that are powder coated.
- Bolt attaching kit.

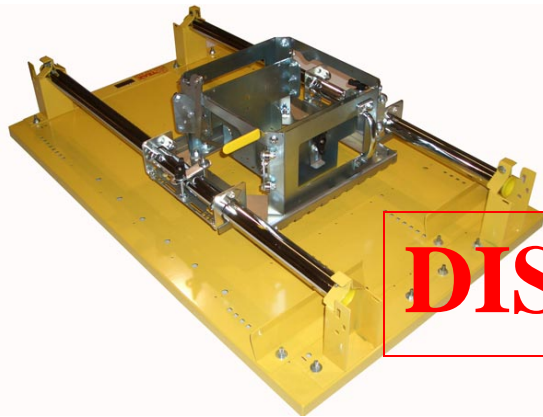
## Includes:

- Assembled Carriage
- Guide Tubes
- Mounting Hardware
- Building instructions

# Table Top Units

# Floating Router Table

---



Does not include the router motor.

**Part Number:** FLTBL

**Part Description:** Floating Router Table

**List Price:** \$1299.00

**DISCONTINUED**

## Product Description:

- Never Goes Out Of Square
- 30" Cross Dado
- Angled Fence System Eliminates Misalignment Due To Dust Build Up
- Floating Router Plate gives consistent dados even on warped panels
- Accepts a Variety of Router Motors
- Sealed Bearing System

## Standard Equipment:

- 48" x 30" Powder-Coated Steel Table
- Accu-Square Alignment System
- Cord Holder
- Floating Router Plate

## Optional Equipment:

- Universal Saw Insert Plate - See panel saw parts & accessories

# Dual Arm Saw

---



**Part Number:** DAS  
**Part Description:** Dual Arm Saw  
**List Price:** \$3999.00

## **Product Description:**

- Never Goes Out Of Square
- 36.5" X 60.5" Powder-Coated Steel Table
- Dust Buster Fence System – Eliminates Misalignment Due To Dust Build-Up!
- Dual Position Fences and Blade Guard!
- User Can Pull The Saw Forward Like A Radial Arm Saw Or Push Away Like A Circular Saw.

## **Standard Equipment:**

- Powder-Coated Steel Table
- Sealed Bearing System
- 3 HP 5402NA Makita Saw Motor, 110 volt, 2200 RPM
- Dust Collection Hook-Up in Saw and Table
- Accu-Square<sup>®</sup> Alignment System
- Cord Holder

# Hand Held Cutters

## Coro-Claw Deluxe

---



**Part Description:** Coro-Claw™  
**Part Number:** CCD  
**List Price:** \$14.95

**Replacement Blades – 2 pack**  
**Part Number:** CCDRH  
**List Price:** \$19.95

### Product Description:

- Hand-held flute cutter for corrugated PVC such as Coroplast®!
- Designed for 4 mil corrugated pvc, but capable of cutting 5 & 6 mil
- Ergonomically designed handle for effortless cutting!
- Angle of the blade allows user to utilize the larger muscles of the back and shoulder!
- Score with outer prong and cut with inner prong.
- Replaceable blades
- Most economical flute cutter on the market!
- Every sign shop should have at least one!

## Coro-Claw X

---



**Part Description:** Coro-Claw X™  
**Part Number:** CCX  
**List Price:** \$29.95

**Replacement Blades – 2 pack**  
**Part Number:** CCXRH  
**List Price:** \$39.95

### Product Description:

- Hand-held flute cutter for **10 mil** corrugated PVC such as Coroplast®!
- Unique blade designed for easy cutting!
- Score with outer prong and cut with inner prong.
- Replaceable blades available
- Most economical flute cutter on the market!
- Hand cutting along the flutes of 10 mil Corrugated PVC was nearly impossible until now.

## Coro-Claw III

---



**Part Description:** Coro-Claw III™  
**Part Number:** CC3  
**List Price:** \$14.95

### Product Description:

- Hand-held flute cutter for corrugated PVC such as Coroplast®!
- Designed for 3 mil corrugated PVC.
- Score with one prong, cut with two!
- Replaceable blades
- Most economical flute cutter on the market!

## Coro-Pins



**Part Number:** CP  
**Part Description:** Coro-Pins  
**List Price:** \$14.95 per box of 20

**Product Description:**

- Coro-Pins are designed to slip into the flutes of Coroplast® to easily connect pieces together.
- Loop designed on top to easily suspend signs made from Coroplast®.
- You can make a one sided or two sided sign out of one sheet of Coroplast®.
- Score Coroplast® to make 3 or 4 sided, free standing columns.
- Easily make POP displays, free standing and portable signs.

## Biddi Safety Knife



**Part Description:** Biddi Safety Knife  
**Part Number:** BDSK  
**List Price:** \$19.95

**Replacement Blades – 2 pack**  
**Part Number:** BDSKRH  
**List Price:** \$19.95

**Product Description:**

- Hand-held cutter for vinyl wrapping, banner material, laminate or film.
- Biddi is short for Bi Directional knife because you can cut forward and backward.
- Ergonomically designed handle for effortless cutting!
- The forward blade is used for making accurate cuts, in a straight line or curved.
- The back blade is used for making fast long cuts right off the printer.
- It cuts faster and safer than other knives on the market.
- Will not cut into printer or table tops.

## Guardian Knife Guide



<b>Part Description:</b>	<b>Part Number:</b>	<b>List Price:</b>
36 inch –with engraved ruler	GKG36	\$89.95
54 inch – with engraved ruler	GKG54	\$119.95
66 inch – no ruler	GKG66	\$119.95
102 inch – no ruler	GKG102	\$199.95

**Product Description:**

- Plunge cut, score cut, angle cut
- Make repeat cuts quickly, easily & safely
- Knife glides along extrusion
- Knife will not jump and cut user
- Perfect for Sign Shops, Picture Framers
- New & Improved – 36 & 54 inch guides are anodized & laser engraved with built in ruler

# Policies & Warranty

# Shipping Policies

## **General Shipping Policies**

We request that all drop-ship orders shipped from our facility be billed to our account number. This protects you and your company in the event of damage to the shipment occurs.

All purchase orders must specify commercial or residential delivery. Lift gate services must be requested. Residential fees are applicable to businesses located on residential property.

### **Accessorial Freight Charges**

These fees vary depending upon the carrier.

Residential Delivery:	\$20.00 - \$40.00
Lift Gate:	\$0.00 - \$25.00
Appointment:	\$25.00
Reconsignment:	\$30.00 - \$50.00

### **Damaged Shipments**

All of our machines are crated in order to prevent damage. However, please encourage all customers to fully inspect the machine before signing the release. Instruct your customers to write, “**SUBJECT TO INSPECTION**” on the bill of lading. This statement protects both our company’s and the customer’s interests. If any visible damage to the machine has occurred, it must be fully documented on the bill of lading. Contact us **immediately** to report a damaged shipment. Saw Trax Mfg., Inc. reserves the right to refuse to file claims against accepted machines.

Should you be notified of a damaged shipment, have the customer contact us immediately. We will determine the extent of the damage, and the next course of action. Fortunately, our machines are components based, and many parts can be easily replaced.

### **Claims**

All claims shipped on our account number, must be submitted by Saw Trax Mfg., Inc. We will do our best to expedite the process, but all freight companies have 120 days to process a claim.

If your shipment was sent via 3<sup>rd</sup> Party billing, your company is responsible for all claim processing, replacement parts, and replacement machinery.

### **3<sup>rd</sup> Party Billing**

Should you choose to utilize 3<sup>rd</sup> Party billing, your company will be responsible for handling all aspects of the shipping process. Provide all necessary shipping documents, such as the Bill of Lading, and be responsible for payment to the 3<sup>rd</sup> party shipping company. If an item is shipped on your company’s account number and it is damaged, your company is responsible for filing the claim with the shipping company and replacing at your own expense any damaged items.

## General Policies

### Pricing

We make every effort to notify you of price increases 30 days prior to the effective date; however, all pricing is subject to change at any time without notice.

### Quotes

Quotes are valid for 30 days unless specified otherwise. Please contact your account representative for pricing on equipment and shipping.

### Orders

Each order is reviewed by your account representative and submitted to the accounting department for processing. A confirmation will be sent to your accounting department. Please contact your account representative to request that tracking numbers be sent to you.

### Cancellations

All cancellation requests are handled on a case-by-case basis. Our general policy allows orders to be cancelled up until the time it has been pulled for processing by the factory.

### Returns

Each machine is custom built, and our general sales policy states that **all sales are final**. However, each scenario will be reviewed on a case by case basis. Accepted returns will be shipped at the customer's expense and are subject to a 25% restocking fee. Your company may choose to accept the return and have the unit shipped back to your warehouse for resale.

## Warranty

Every Saw Trax Vertical Panel Saw is thoroughly inspected before leaving the factory. It is warranted to be free from defects from workmanship and materials for one year on all components except the saw motor. Should any trouble develop during the warranty period, contact us for a RMA & return that component with proof of purchase date, freight prepaid to Saw Trax Mfg. Co. Inc. If inspection shows the trouble caused by defective workmanship or materials, Saw Trax Mfg. Co. Inc. will repair (or, at our option, replace) without charge.

This warranty does not apply where:

- Repairs have been made or attempted by others.
- Repairs are required because of normal wear and tear.
- The tool has been abused, misused or improperly maintained.
- Alterations have been made to the tool.
- Corrosion and / or rust have developed due to scratches in the finish.
- The saw motor is covered by the saw manufacturer's warranty and is not covered by Saw Trax Mfg.Co., Inc.

In no event shall Saw Trax Mfg. Co., Inc. be liable for any indirect, incidental or consequential damages from the sale or use of this product. This disclaimer applies both during and after the duration of this warranty.

Saw Trax Mfg. Co. Inc. disclaims liability for any implied warranties, including (but not limited to) implied warranties of "merchantability" and/or "fitness" for a specific purpose, after the term of this warranty.